

**STEVIA SCHIBLII (ASTERACEAE: EUPATORIEAE), A NEW SPECIES FROM OAXACA, MEXICO**

**Billie L. Turner**

Plant Resources Center  
The University of Texas  
Austin, Texas 78712  
billie@uts.cc.utexas.edu

Routine identification of Mexican comps has revealed the following novelty:

**STEVIA SCHIBLII** B.L. Turner, **sp. nov.** Fig. 1

*Steviae elatiori* H.B.K. similes sed foliis comparate paucis glabris plerumque basalibus (vs numerosis, valde pubescentibus, vix basalibus) et lobis corollae minoribus (1-2 mm longis vs 2-3 mm longis).

**Perennial herbs** 30-60 cm high (label data), arising from slender rhizomes. **Leaves** mostly opposite and basal, obovate, 3-6 cm long, 0.5-2.5 cm wide; petioles 2-25 mm long, tapered upon by the blades, the latter 3-nerved from the base, essentially glabrous with rounded serrations along the upper half. **Capitulescence** a much-branched, expanded panicle, 10-45 cm high, 10-30 cm wide, glandular-pubescent throughout, the ultimate peduncles mostly 10-25 mm long. **Involucre** 5-6 mm high having linear-lanceolate bracts with narrowly acute apices. **Corollas** white, 4.5-5.0 mm long, the lobes ca 2 mm long, sparsely pubescent with multiseptate hairs, these scattered among a more numerous vestiture of short glandular hairs. **Achenes** black, ca 3.5 mm long, sparsely pubescent, the pappus a crown of white scales ca 0.3 high, occasionally 1 or 2 of the achenes bearing slender awns 3-5 mm long.

**TYPE: MEXICO. OAXACA:** Mpio. Santiago Textitlan, debajo de Cerro Colmillo, "Bosque de pino, suelo negro," ca 1535 m, 28 Aug 2006, *Idalia Trujillo Olazo 343* (Holotype: TEX).

**ADDITIONAL COLLECTIONS EXAMINED: MEXICO. OAXACA:**  
Mpio. Santiago Textitlan, "Comunidad de Llano Yerba. Donde se junta el arroyo de Agua Amarilla y el arroyo de Piedra Blanca." disturbed pine-oak forests, ca 1319 m, 16 Aug 2006, *Martinez 1882* (TEX); Buenavista, paraje Cacalosuche, pine-oak forests, ca 1320 m, 31 Aug 2006, *Salinas 434* (TEX).

In my treatment of *Stevia* for the Comps of Mexico (*Phytologia* Memoirs 11: 170-197. 1997), the present novelty will key to the widespread, highly variable, *S. elatior* of the series Podocephalae. It is readily distinguished from that species by its more delicate habit, relatively fewer, glabrous, mostly basal leaves, and smaller corolla lobes.

The species is named for Leo Schibli (1958-2004), Swiss-born conservationist and specialist in geographic information systems. He was a founding member of SERBO (Society for the Study of Biotic Resources of Oaxaca), and was devoted to fostering awareness and appreciation of the rich biological heritage of Oaxaca.

#### **ACKNOWLEDGEMENTS**

I am grateful to Guy Nesom for the Latin diagnosis, and to him and Emily Lott for reviewing the manuscript. Emily also provided information relating to the eponym.

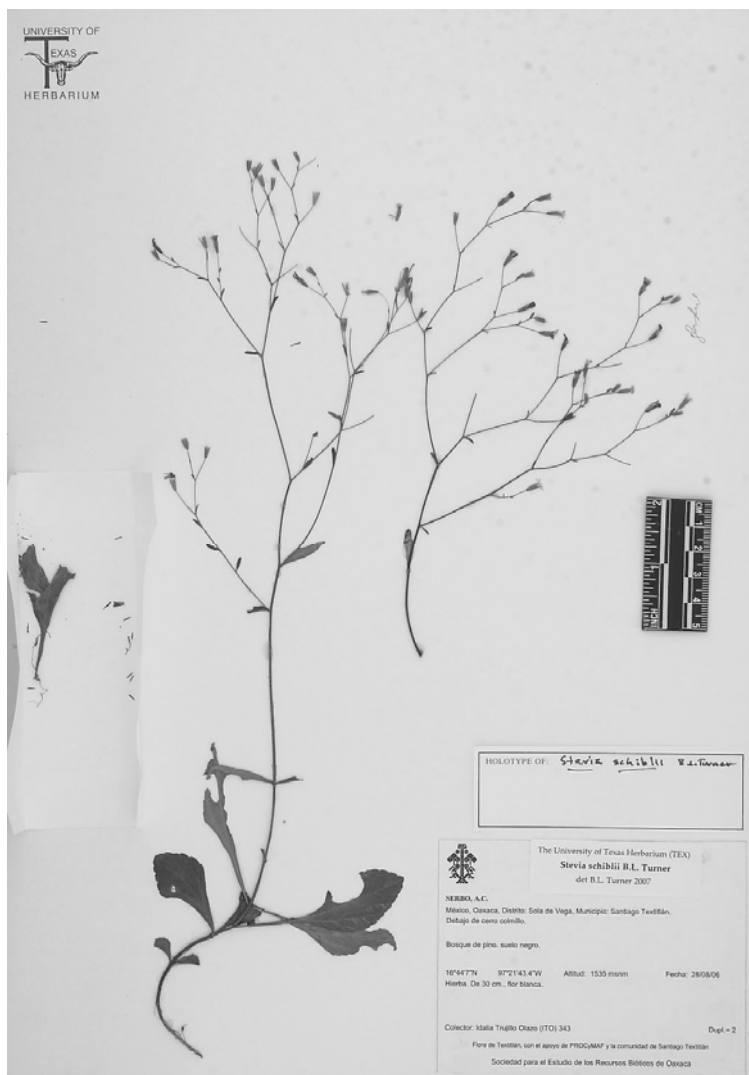


Fig. 1. *Stevia schiblii* (holotype)