

Errata

REVISION OF SALVIA SECT. FARINACEAE (LAMIACEAE)

Billie L. Turner

Plant Resources Center
The University of Texas
Austin, Texas 78712
billie@uts.cc.utexas.edu

Phytologia 90(3): 425-432 (December, 2008).

The figures for the type specimens for the newly described types of four *Salvia* species were inadvertently omitted from *Phytologia* 90(2): 1163-175 (2008). These figures are presented.

SALVIA GYPSOPHILA B.L. Turner, **sp. nov.** **Fig. 1, Map 3**

Salviae rubropunctatae B. Rob. & Fernald similis sed differt labio supero calycis 3-venoso (vs. 5-7-venoso) et tubo corollae trichomatibus non ramosis (vs. ramosis).

TYPE: MEXICO. NUEVO LEON: Mpio. Aramberri, "On exposed gypsum hills...about 7 miles north of La Escondida, 24 Sep 1973, *J.L. Reveal & N.D. Atwood 3421* (holotype: TEX).

SALVIA JACALANA B.L. Turner, **sp. nov.** **Fig. 2, Map 4**

Salviae jaimehintonianae Ramamoorthy similis sed differt caulibus dense albopubescentibus trichomatibus patentibus (vs glabris vel paene glabris) et foliis pubescentibus subter secus venas (vs glabris).

TYPE: MEXICO. HIDALGO: Mpio. Jacala, "6.5 air km E-NE of Jacala, between Cuesta Colorado and El Pinalito on Mex 85. At a sharp bend in road. Limestone boulders covered with cacti and many ferns in woodland of pine and oak." 1700 m, 13 Jul 1991. *M Mayfield, A. Hemple & A. Jack 820* (holotype: TEX).

SALVIA RICHARDSONII B.L. Turner, **sp. nov.** **Fig. 3, Map 3**

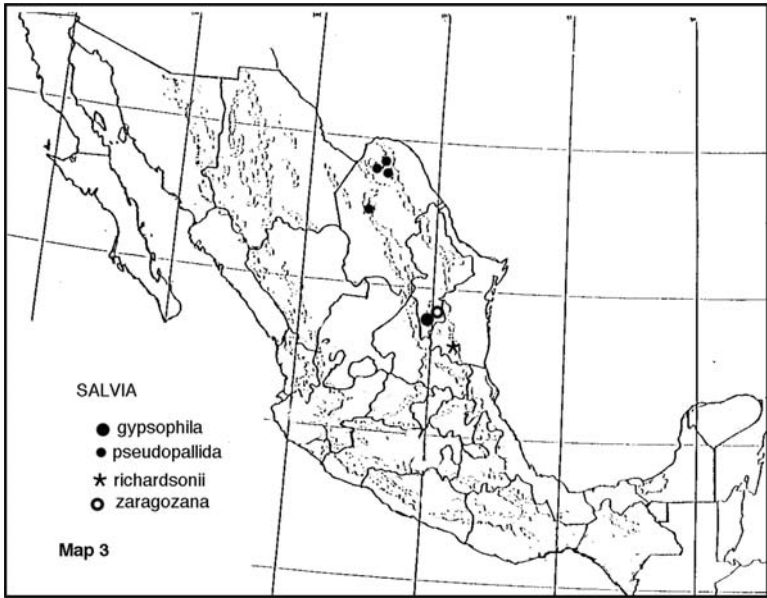
Salviae zaragozanae B.L. Turner similis sed foliis midcaulinis longioribus (9-12 cm longis vs 6-8 cm) laminis lineari-lanceolatis (vs ovatis) latissimis ad vel prope medium et bracteis floralibus longioribus plus minusve persistentibus (vs deciduis).

TYPE: MEXICO. TAMAULIPAS: Mpio. Gomez Farias, Rancho Del Cielo, "Between La Perra and Indian Springs," 26 Nov 1968, *Alfred Richardson 1050* (holotype: TEX).

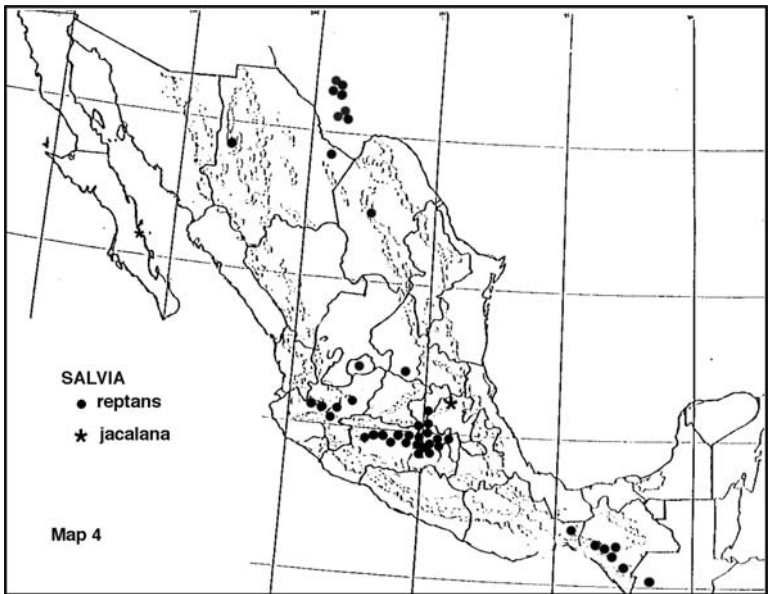
SALVIA ZARAGOZANA B.L. Turner, **sp. nov.** **Fig. 4, Map. 3**

Salviae gypsophilae B.L. Turner similis sed differt foliis subter appressi-pilosis (non gossypinis) venatione perspicue visibili et calycibus aliquantum majoribus non dense floccosis.

TYPE: MEXICO. NUEVO LEON: Mpio. Zaragoza, Cerro El Viejo, pine-oak woodlands, 2375 m, 5 Oct 1992, *Hinton et al. 22382* (holotype TEX).



Map 3. Distributions of *Salvia gypsophila*, *S. pseudopallida*, *S. richardsonii* and *S. zaragozana*.



Map 4. Distributions of *Salvia reptans* and *S. jacalana*.

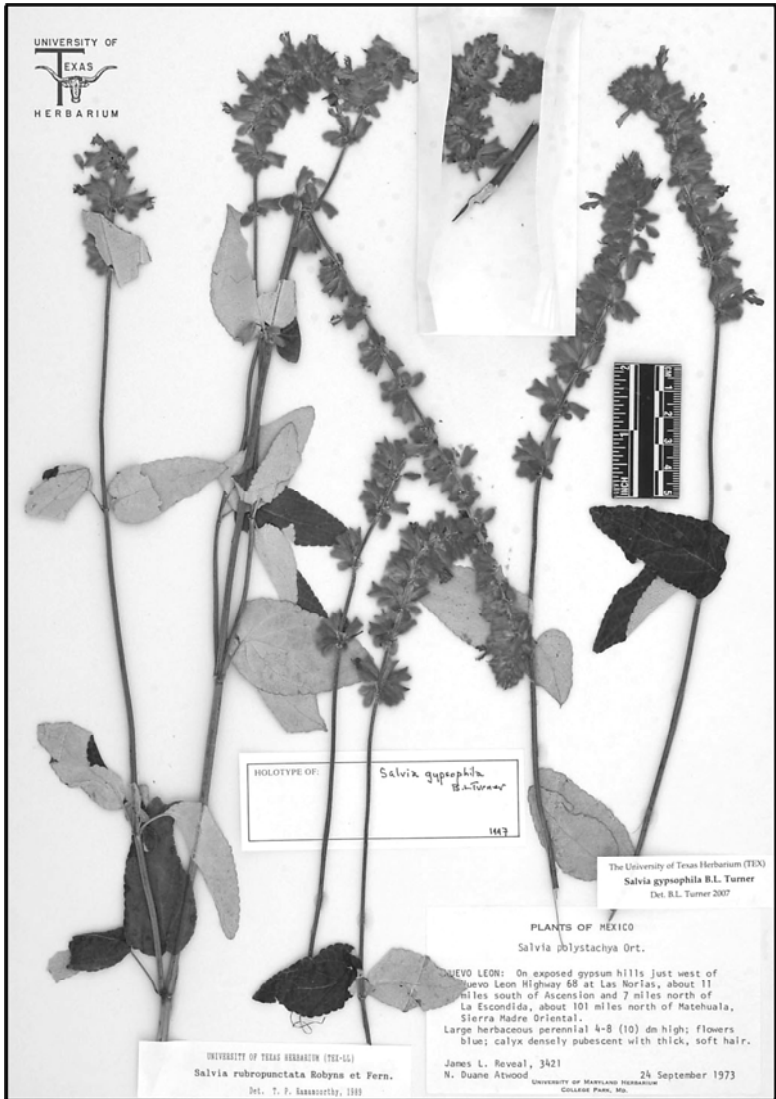


Figure 1. *Salvia gypsophila* B. L. Turner, holotype.

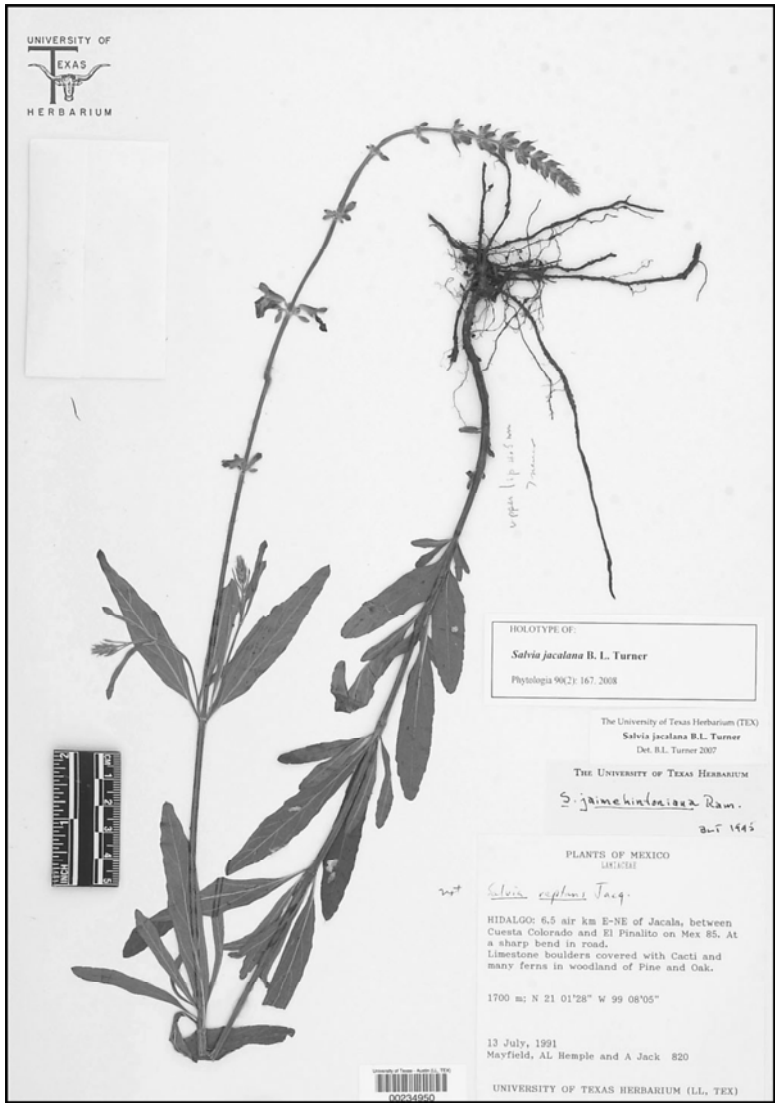


Figure 2. *Salvia jacalana* B. L. Turner, holotype.

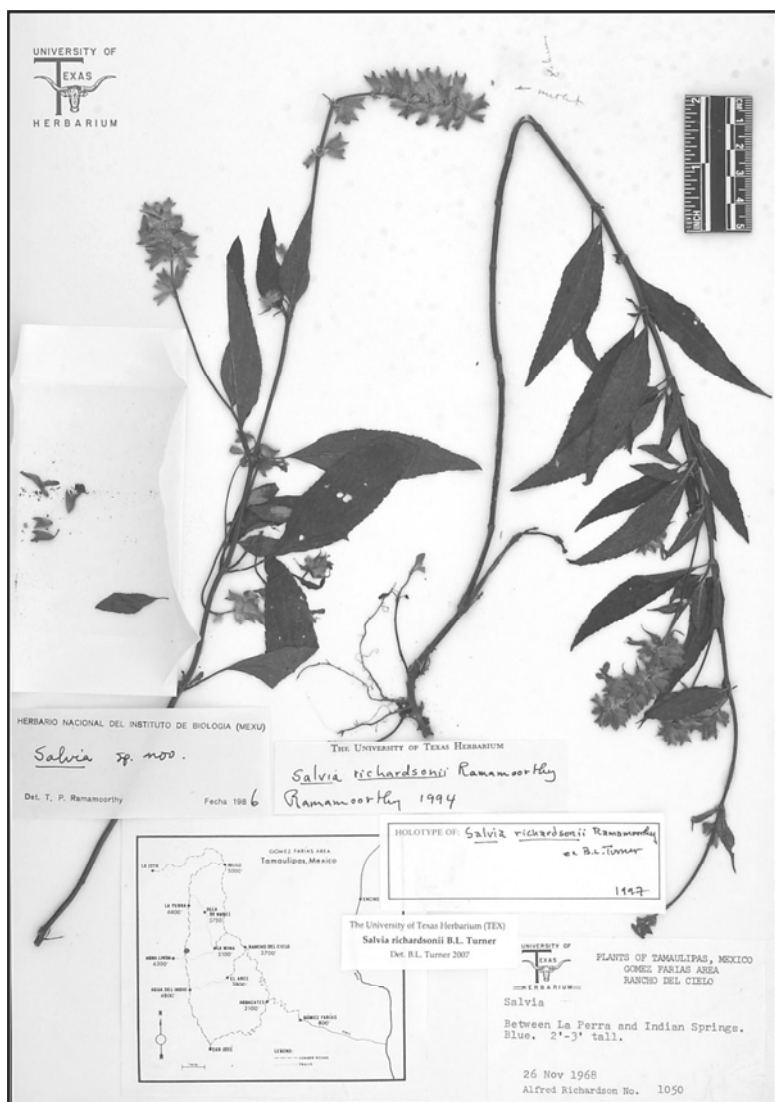


Figure 3. *Salvia richardsonii* B. L. Turner, holotype.



Figure 4. *Salvia zaragozana* B. L. Turner, holotype.