

Two new species of *Bartlettina* (Asteraceae: Eupatorieae) from Oaxaca, Mexico**Billie L. Turner**

Plant Resources Center, The University of Texas, Austin TX 78712, billie@uts.cc.utexas.edu

ABSTRACT

Two new taxa of *Bartlettina* from Oaxaca are described: ***Bartlettina solavegana*** B.L. Turner, **sp. nov.** and ***Bartlettina textitlana*** B.L. Turner, **sp. nov.** Photographs of their types are provided, along with a map showing their distribution. Since the treatment of *Bartlettina* for Mexico (Turner (1997)), three additional taxa have been added to the assemblage (Turner 2010), and the two proposed herein, all from Oaxaca; the later state is now known to have at least 14 species.

Published on-line: www.phytologia.org *Phytologia* 95(1): 83-86 (Feb. 1, 2013).

KEY WORDS: Asteraceae, Eupatorieae, *Bartlettina*, Mexico, Oaxaca

Routine identification of Mexican comps, especially those garnered in the state of Oaxaca by SERBO, has occasioned the present paper.

BARTLETTINA SOLAVEGANA B.L. Turner, **sp. nov.** **Fig. 1.**

Shrubs to 2 m high. **Stems** (upper) densely puberulent with softly-matted, slender, hairs, the vestiture ca 0.5 mm high. **Leaves** opposite throughout, 20-25 cm long, 8-9 cm wide; petioles 3-5 cm long; blades pinninervate, widest near the middle, the upper and lower surfaces glabrous or nearly so, the margins irregularly serrate. **Capitulescence** a terminal, cymose panicle ca 15 cm high and as wide, composed of numerous heads, the ultimate peduncles 3-10 mm long, puberulent like the stems. **Heads** 7-8 mm high, 8-9 mm wide; involucre bracts imbricate, 3-4 seriate, the inner series lanceolate, ca 7 mm long, 1 mm wide. **Receptacle**, 2-3 mm across, plane, glabrous. **Florets** ca 80 to a head; corollas pink, ca 5 mm long, glabrous; lobes 5, ca 1 mm long. **Achenes** ca 2 mm long, glabrous; pappus of ca 50 stiffly white bristles ca 5 mm long.

TYPE: MEXICO. OAXACANA: Distrito Sola de Vega, Mpio. Santiago Textitlan, "A u lado de la Hierba Santa." ca 1708 m, 16 39 53.6 N, 97 16 10.2 W, 19 Feb 2007, *Maria Ester Jacob Salinas 1647* (Holotype MEXU; isotype LL-TEX).

In my treatment of the *Bartlettina* complex of Mexico (Turner 2010), this novelty will key to *B. serboana* B.L. Turner which it resembles in habit and leaf morphology, but having much smaller heads (involucres ca 4 mm high, vs 7 mm) and fewer florets to a head (ca 15, vs ca 80), and glabrous corollas (vs pubescent).

Name derived, in part, from the Distrito Sola de Vega, whence the type (Map 1).

BARTLETTINA TEXTITLANA B.L. Turner, **sp. nov.** **Fig. 2**

Shrubs to 2.5 m high, minutely pubescent, somewhat viscous. **Leaves** 10-16 cm long, 3-4 cm wide; petioles ca 1 cm long; blades lanceolate, widest near the middle, the juncture of petiole with blades forming a distinct auricle, the margins entire. **Capitulescence** a terminal cymose-panicle ca 6 cm high, 9 cm wide, the ultimate peduncles 4-10 mm long. **Heads** ca 7 mm long, 2 mm wide; involucre bracts 5-6, scarcely imbricate, linear-lanceolate, ca 5 mm long, 1.5 mm wide. **Receptacle** 1 mm across, glabrous,

plane. **Florets** 4 to a head; corollas white, glabrous, 5-6 mm long; lobes 5, ca 1 mm long. **Achenes** glabrous, somewhat viscid, ca 3 mm long; pappus of 30-40 white bristles ca 4 mm long.

TYPE: MEXICO. OAXACA: Distrito, Sola de Vega, Mpio. Santiago Textitlan, “Tierra Blanca,” Bosque de Pino, 2290 m, 16 45 03 N, 97 11 45.9 W, 1 Jan 2007, *Maria Ester Jacob Salinas 1498* (Holotype: MEXU; isotype LL-TEX).

What with its auriculate, short petioles, and few-flowered, scarcely imbricate, heads, this is a very distinct species. Named, in part, from the Municipio, whence the type (Map 1).

Maps for all of the previously described taxa of *Bartlettina* are provided in Turner (2010).

ACKNOWLEDGEMENTS

I am indebted to SERBO for providing plants for identification, and to Jana Kos for editorial assistance.

LITERATURE CITED

- Turner, B.L. 1997. *Bartlettina*, in Comps of Mexico: Eupatorieae. *Phytologia Memoirs* 11: 101-103.
 Turner, B.L. 2010. Mexican species of the genus *Bartlettina* (Asteraceae: Eupatorieae), and erection of three new species, *Phytologia* 92: 279- 303.

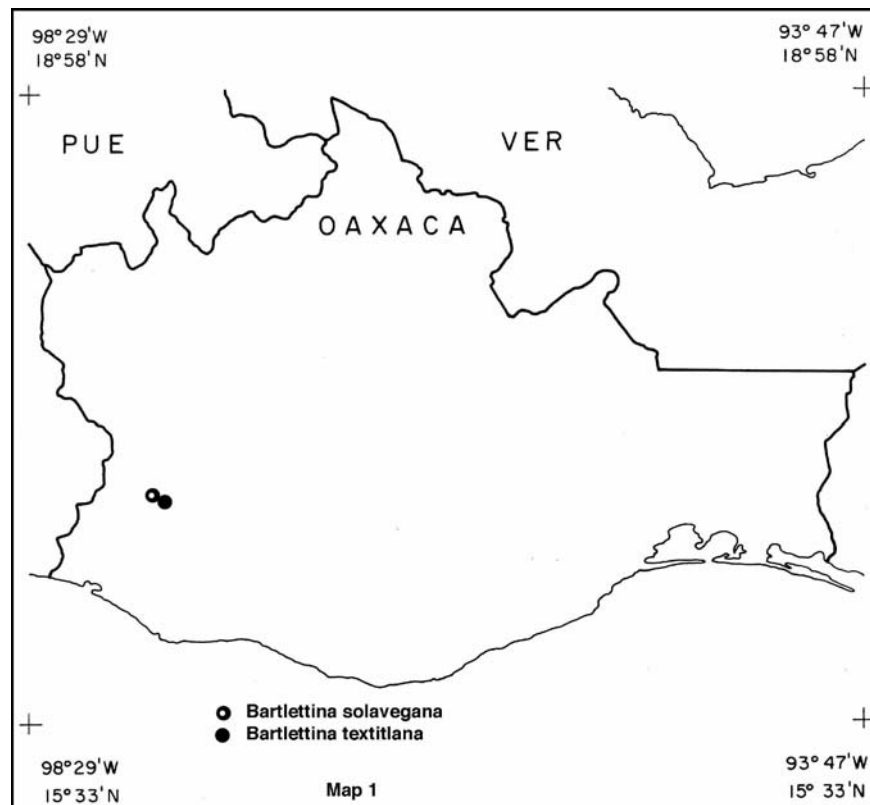




Figure 1. *Bartlettina solavegana* (Holotype).

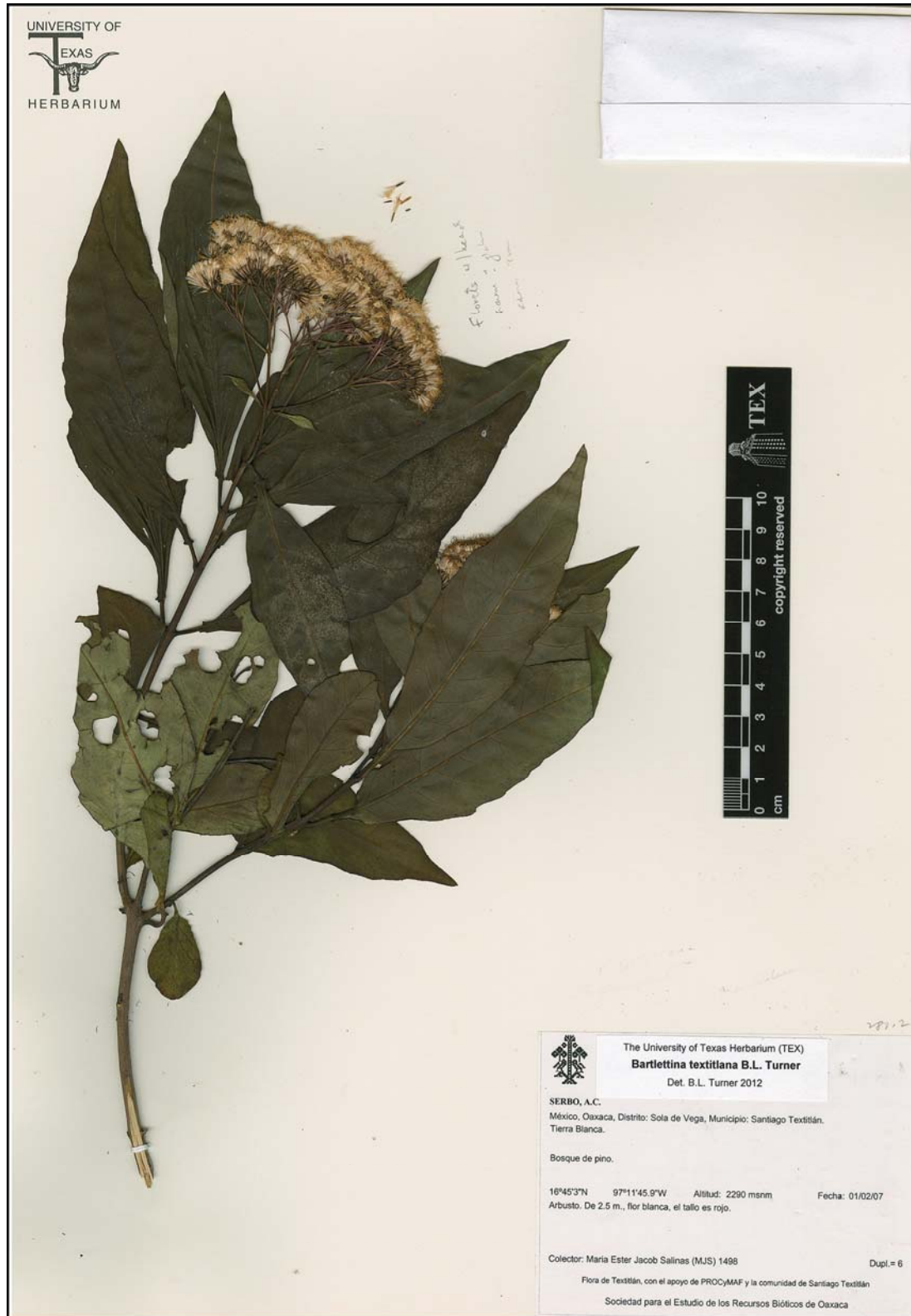


Figure 2. *Bartlettina textilana* (Holotype).